

European Human Exposome Project

# longITools

Sylvain Sebert

University of Oulu - FI



# What is **longITools** about?

HEALTH & ENVIRONMENT DYNAMICS



[ long ] . [ IT ] . [ Tools  ]

## Longitudinal

Understanding changes  
Borrowing power from repeated measures

## IT

Data servers  
FAIR data  
Computation and statistics

## Tools

Apps  
Policies  
Innovation platform

# Why is this important?

- Society is ageing
- Cardio-metabolic and cardio-vascular diseases leading cause of morbidity and mortality
- Large proportion of the attributed **risks** are **man-made**
- Entrenched in the **social and geographical context**
- Sustainable intervention acts via causal pathways

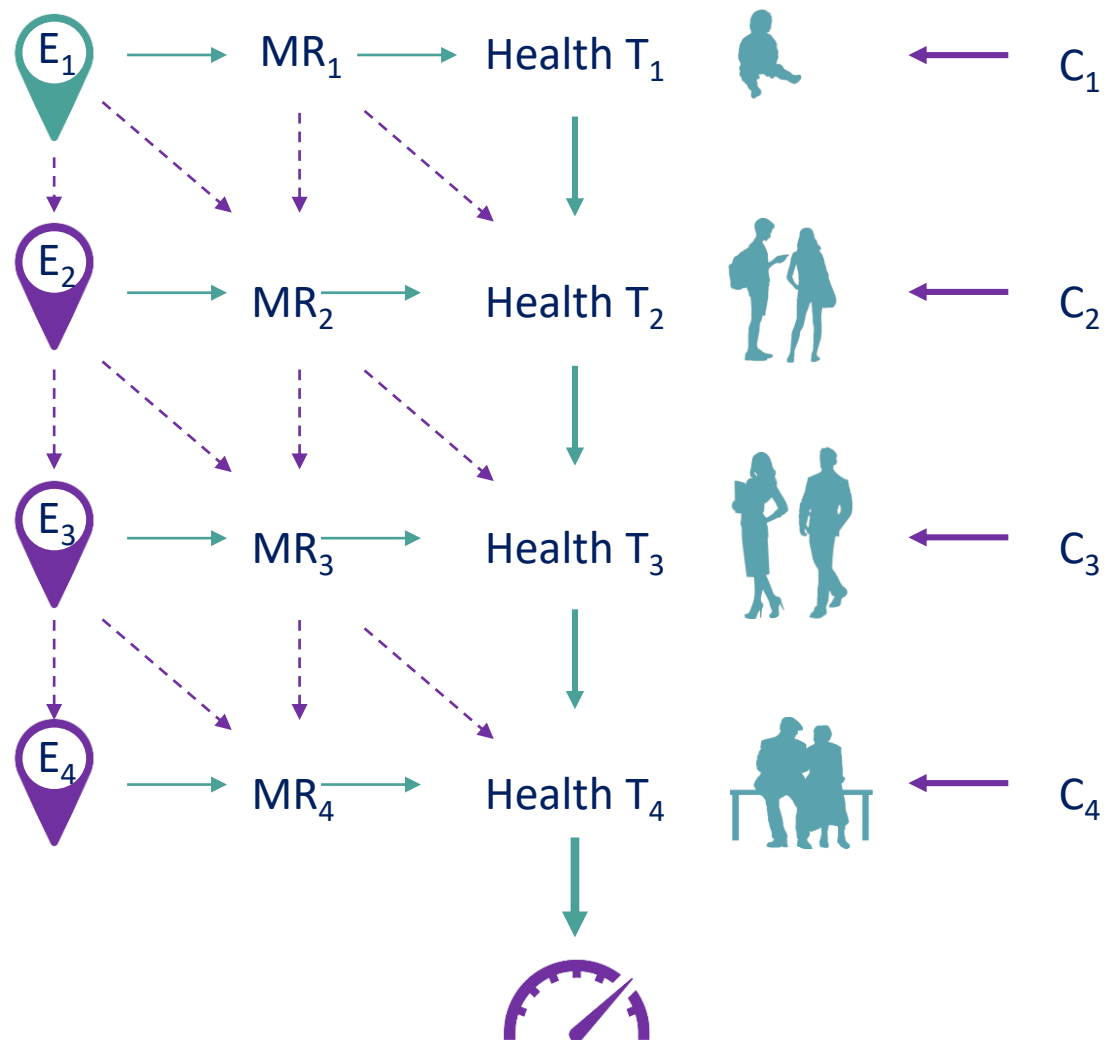


THU 23 JAN

## Research to build on data from 11 million European citizens

Consortium's research will build on life-course data to study cardio-metabolic health trajectories from birth to old age.

### Life-course **exposome** of cardio-metabolic health



CVD **health** and **economic** burden

Capacities and opportunity for changes

Models and simulation

# What will **longITools** deliver in 5 years?

HEALTH & ENVIRONMENT DYNAMICS

## FAIR METADATA



THU 23 JAN

## Research to build on data from 11 million European citizens



ABOUT PARTNERS NEWS & EVENTS IMPACT PUBLICATIONS CONTACT | **INNOVATION PLATFORM**

## INNOVATION PLATFORM

Lorem ipsum dolor sit amet, consectetur adipiscing elit, sed do eiusmod tempor incididunt ut labore et dolore magna aliqua.

Leverage agile frameworks to provide a robust synopsis for high level overviews. Iterative approaches to corporate strategy foster collaborative thinking to further the overall value proposition. Organically grow the holistic world view of disruptive innovation via workplace diversity and empowerment.

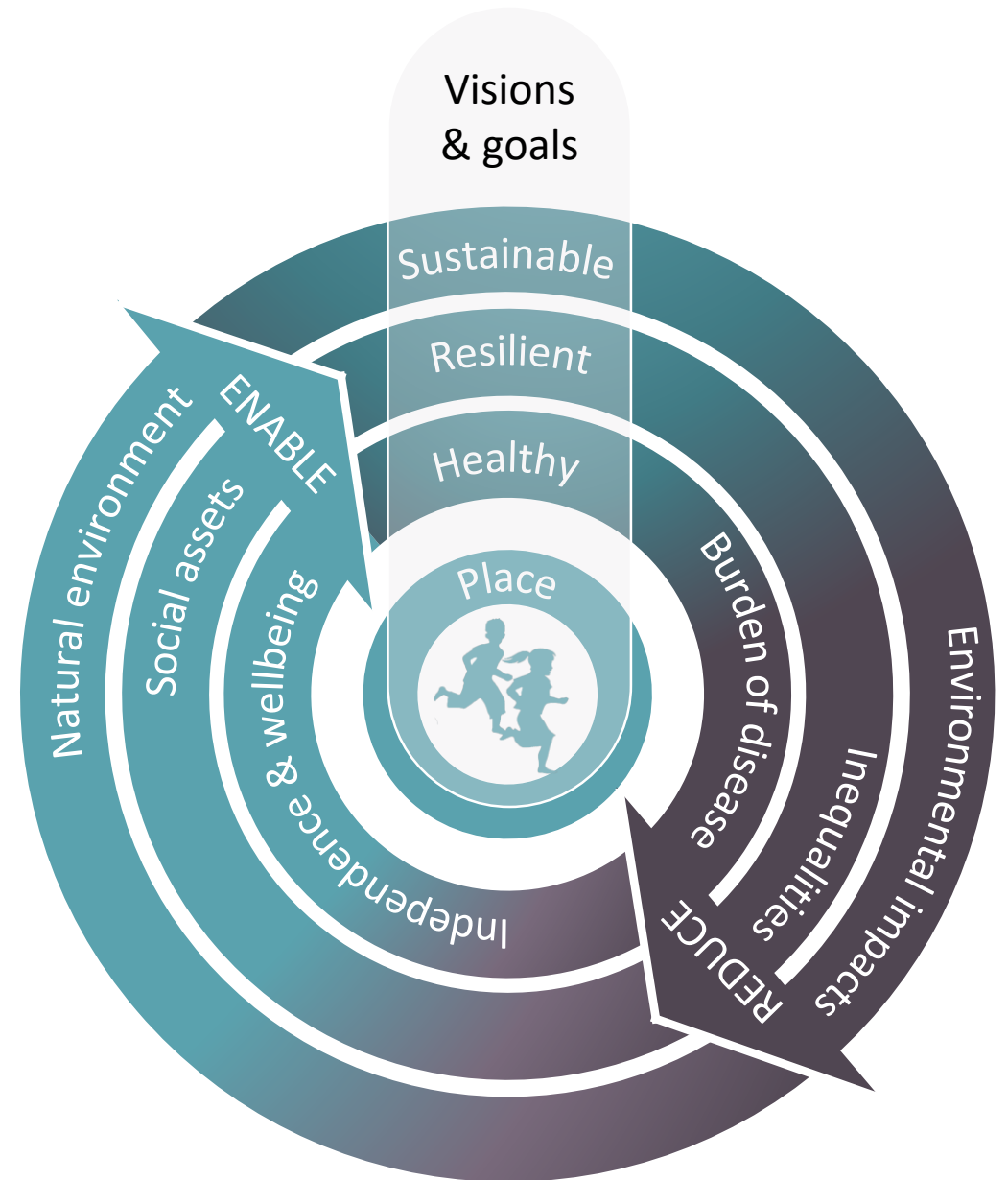
SUBMIT TO THE INNOVATION PLATFORM

Lorem ipsum dolor sit amet, consectetur adipiscing elit, sed do eiusmod tempor incididunt ut labore et dolore magna aliqua.

Lorem ipsum dolor sit amet, consectetur adipiscing elit, sed do eiusmod tempor incididunt ut labore et dolore magna aliqua.

Lorem ipsum dolor sit amet, consectetur adipiscing elit, sed do eiusmod tempor incididunt ut labore et dolore magna aliqua.

# Co-create a one health approach to improve urban life



# What are the critical needs for success?

## (i) Stakeholder interaction

longITools  
HEALTH & ENVIRONMENT DYNAMICS

ABOUT PARTNERS NEWS & EVENTS

## INNOVATION PLATFORM

Co-creative workshops

Proof-of-concept applications

Synthetic data for simulation

Expertise

## (ii) EU – Human Exposome network – Interaction



THU 23 JAN

Research to build on data from 11 million European citizens

Reusable and interoperable data

Publicly available methods with online training

Identification of gaps and overlaps

Environmentally-friendly and stress-free meetings





University of Oulu  
Finland



Erasmus MC  
The Netherlands

Imperial College  
London

Imperial college  
United Kingdom



Betatechnology  
United Kingdom



UNIVERSITY OF  
EASTERN FINLAND

University of  
Eastern Finland  
Finland



CHALMERS  
UNIVERSITY OF TECHNOLOGY

Chalmers University  
of technology  
Sweden



University MC  
Groningen  
The Netherlands



National Institute of  
medical research  
France



University college  
London  
United Kingdom



Universiteit Utrecht

University of  
Utrecht  
The Netherlands



University of Surrey  
United Kingdom



Amsterdam MC  
The Netherlands



University of Oslo  
Norway



University of Bristol  
United Kingdom



University of  
Barcelona  
Spain



Abacus  
Italy



Cynexo  
Italy



University of  
Rome Tor Vergata  
Italy