



**European Committee
of the Regions**

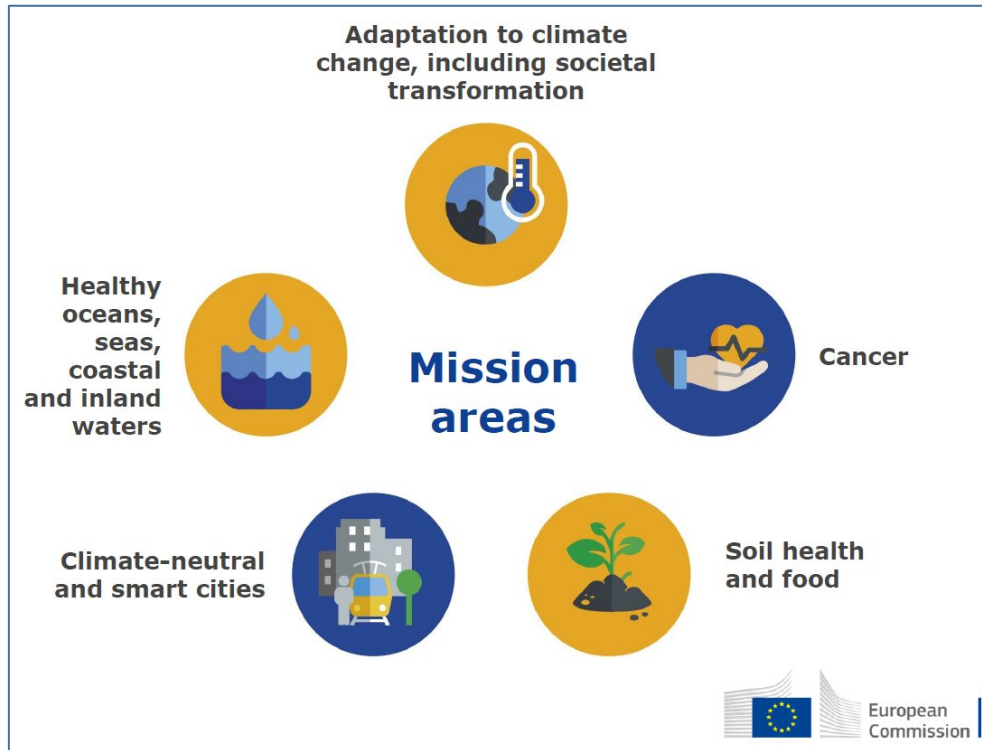
EU Missions – how to make them deliver

Fitting the needs of national and regional variation and specificities

**Online Workshop
28.04.2021**

**Thomas Wobben, Director for consultative work
European Committee of the Regions**

Main elements of the Horizon Missions



Strong territorial focus

Cross-cutting by design

Inter-disciplinary

Going beyond research and innovation

Require a strong integrated approach

Ambition needs massive (private and public) investment and commitment to be realised

CoR general views on missions

- The CoR stresses the crucial importance of the **two climate-focused missions**, "a climate-resilient Europe" and "100 climate-neutral cities by 2030"; is keen to cooperate with the Commission in encouraging applications and nominations from communities, cities and regions representing the full geographical, social and economic diversity of the European territories (CoR Opinion on Climate adaptation)
- Missions should be developed through an **open and participatory process, involving all stakeholders at local, regional, European and global level**. (CoR Opinion on the Horizon Programme)
- The CoR ... emphasizes the importance of **involving towns and regions in "missions" and "partnerships" governance** (CoR Opinion on the ERA Communication)



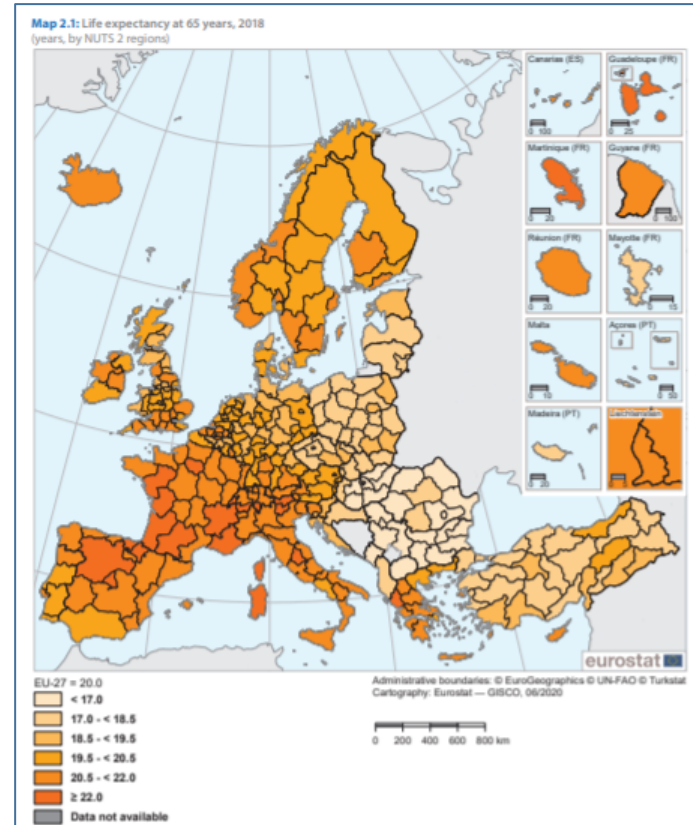
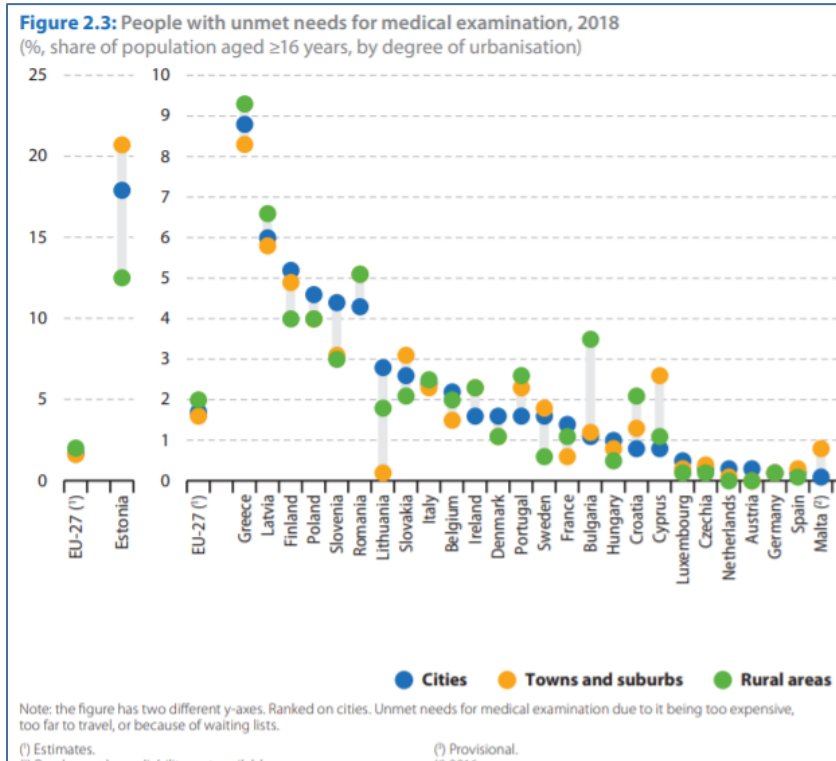
Key questions for today's meeting?

- What and how could countries and regions contribute to the EU missions?
- What new forms of implementation structures and governance are needed, such as national hubs?



Europe's regions are diverse!

Life Expectancy



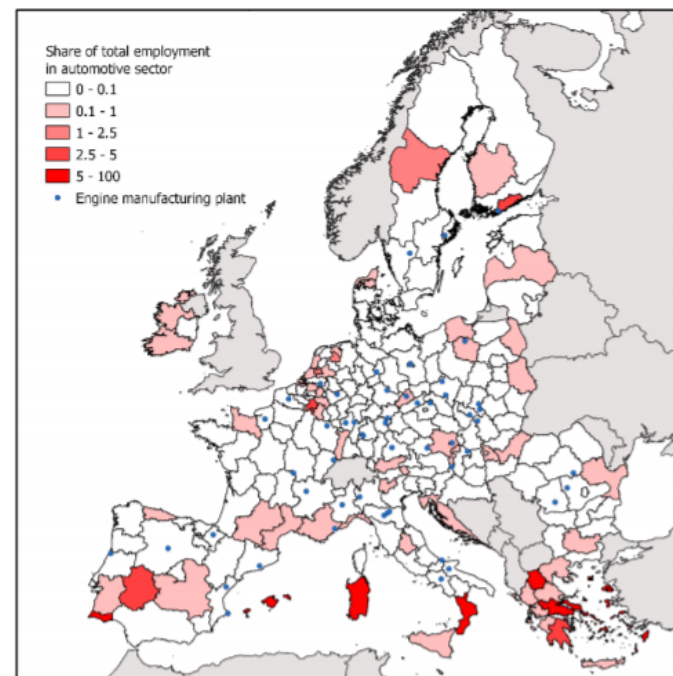
Unmet medical needs

European Regional Yearbook 2020



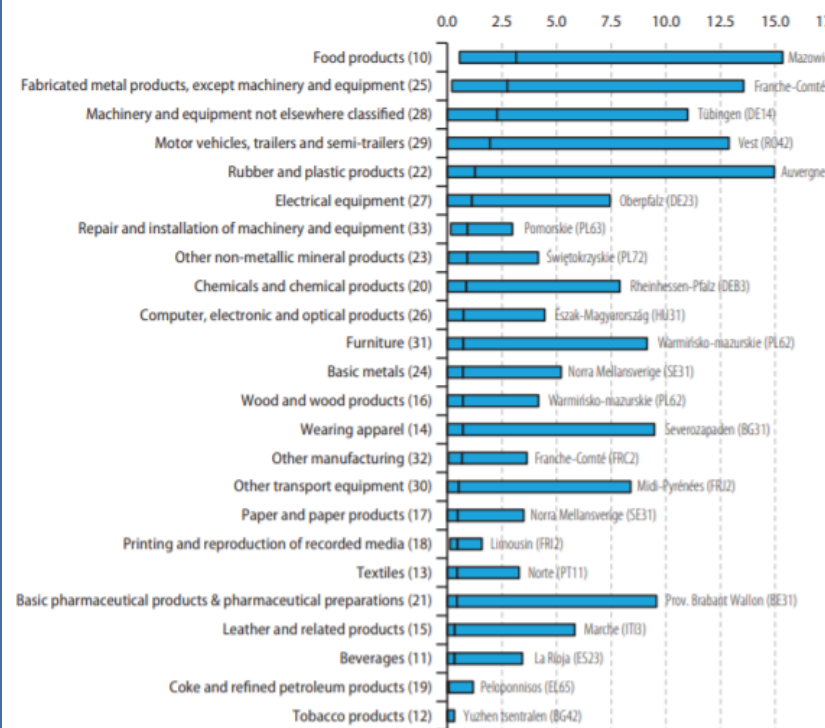
Regional specificities and profiles

Map 2: Employment in automotive manufacturing in the EU



Source: Bruegel based on ACFA 4 and Eurostat SBS

Figure 7.2: Regional specialisation within the manufacturing economy, 2017
(%, share of regional non-financial business economy employment, by NUTS 2 regions)

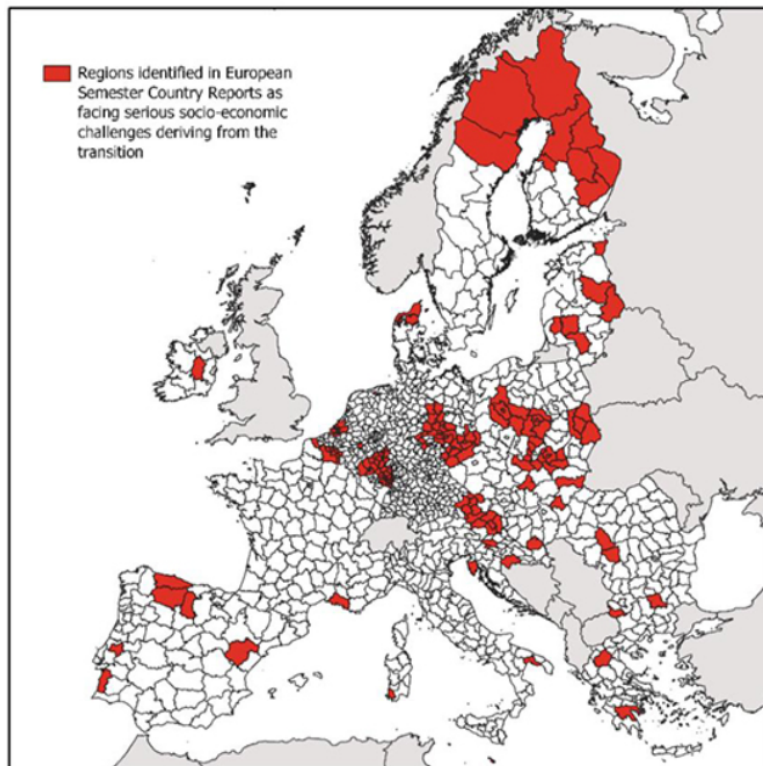


Note: the range of regional values across NUTS level 2 regions is shown by the bar; the EU-27 average is shown by the vertical line inside the bar; the figure is ranked on this share; the name of the region with the highest share is also shown. NACE division codes are given in brackets after each of the activity labels. The figure is based on non-confidential data (some activities are not available for a limited number of regions). France: estimates. Corse (FRMO): 2016. Mayotte (FRYS): not available.

Source: Eurostat (online data codes: sbs_r_nuts06_r2 and sbs_na_sca_r2)

Different regional impact of transition

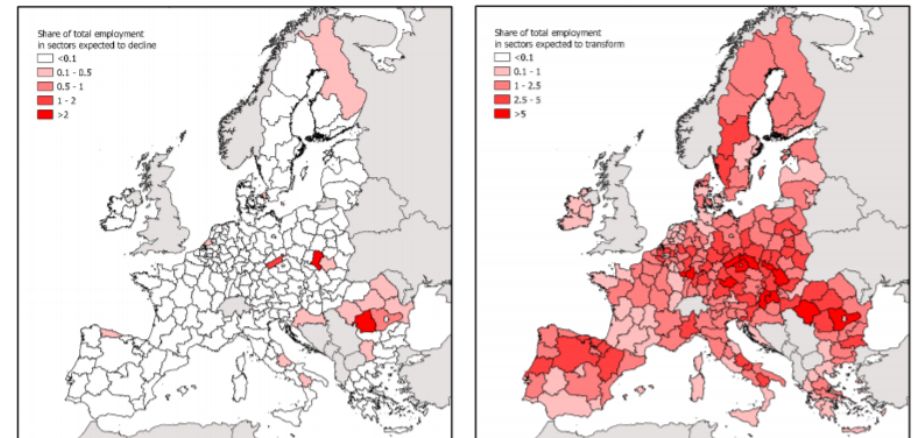
Map 1: Location of "at-risk" regions (in need of "just transition")



Source: Country reports of the European Semester, presented in the European Parliament study

Map 1: Location of 'at-risk' jobs in the EU

Share of employment in sectors expected to decline (lhs) and expected to transform (rhs)



Source: Bruegel based on EC (2018) and Eurostat SBS.

Note: As defined by the European Commission (2018), the sectors expected to decline are 1) mining of coal and lignite, 2) extraction of crude petroleum and 3) natural gas, and the sectors expected to transform are 1) the manufacture of chemicals and chemical products, 2) the manufacture of other non-metallic mineral products, 3) the manufacture of basic metals and 4) the manufacture of motor vehicles, trailers and semi-trailers.

EP Study: A Just Transition Fund - How the EU budget can best assist in the necessary transition from fossil fuels to sustainable energy

Bottom up is the key!



Mission-oriented innovation cannot be top down. It must inspire and harness the full creativity of citizens to tackle problems as urgent as climate change, rising inequality or the challenge of establishing more caring societies

How missions can **be opened up to a wide group of stakeholders**, from individuals, and civil society organisations, to citizen movements or political parties, is critical to forming missions and to ensuring their longevity.

The EU's unique **multilevel governance system is well suited to mission-oriented policies**: member states and regions can experiment within larger EU-wide missions and the lessons can then be shared across member states. Different institutions will be better placed to provide different types of finance.

What and how could regions contribute to the EU missions?

Regions can...

- take **full ownership** of the necessary transition
- **engage the citizen and civic society** in a permanent and meaningful way
- translate the missions in a **(place based) development strategies**
- combine the **missions with an Entrepreneurial Discovery Process** to find tailor made solution
- ensure an **integrated approach of funding and support instruments** to achieve the missions



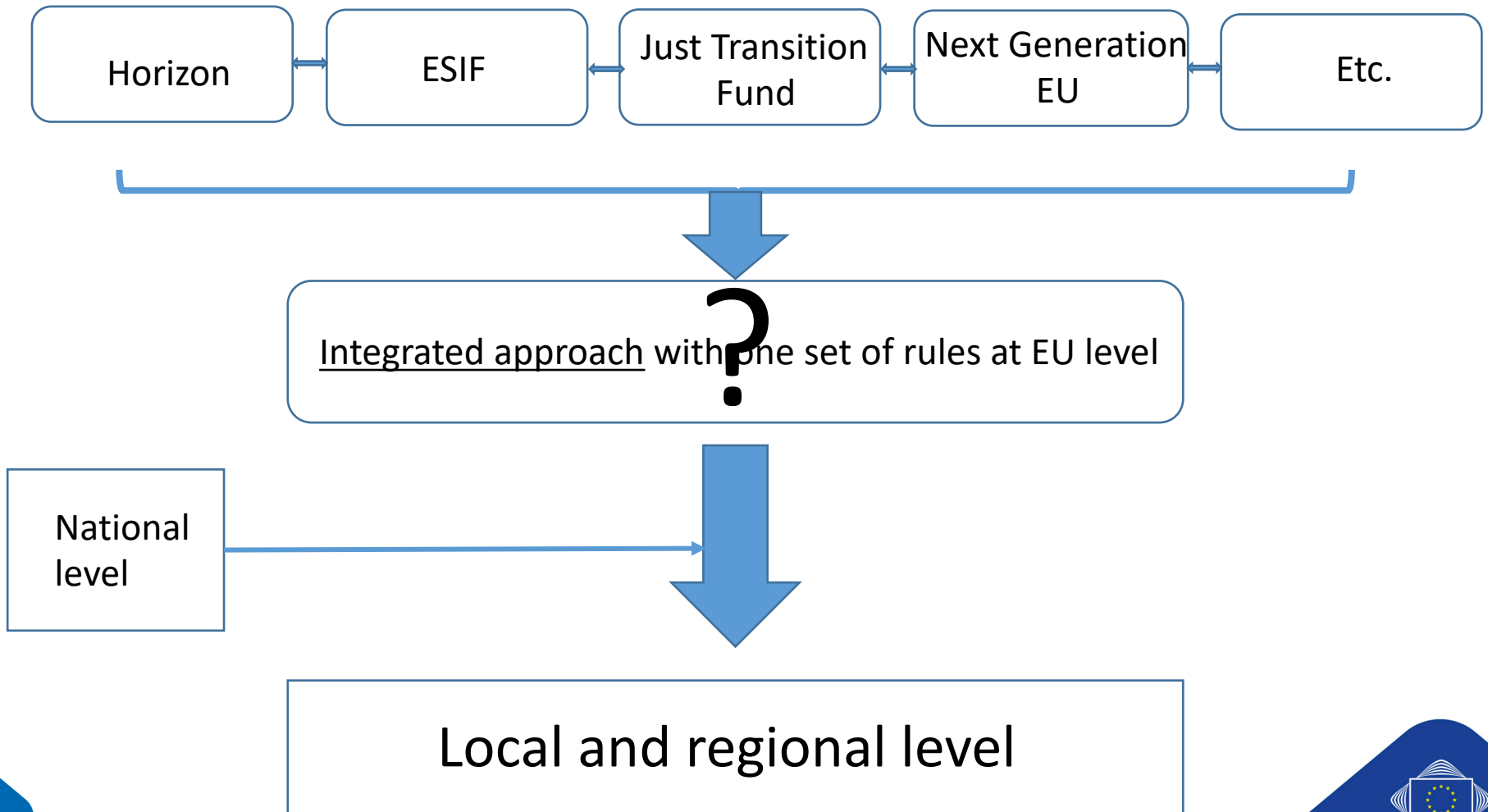
... but Regions are facing Challenges

- Combining short term crisis response with long term recovery
- Ensuring a good coordination of (investment) policies across all levels of government
- Promoting innovation eco-systems
- Effectively sharing knowledge through interregional co-operation
- **Create synergies of different funding streams** for long term objectives

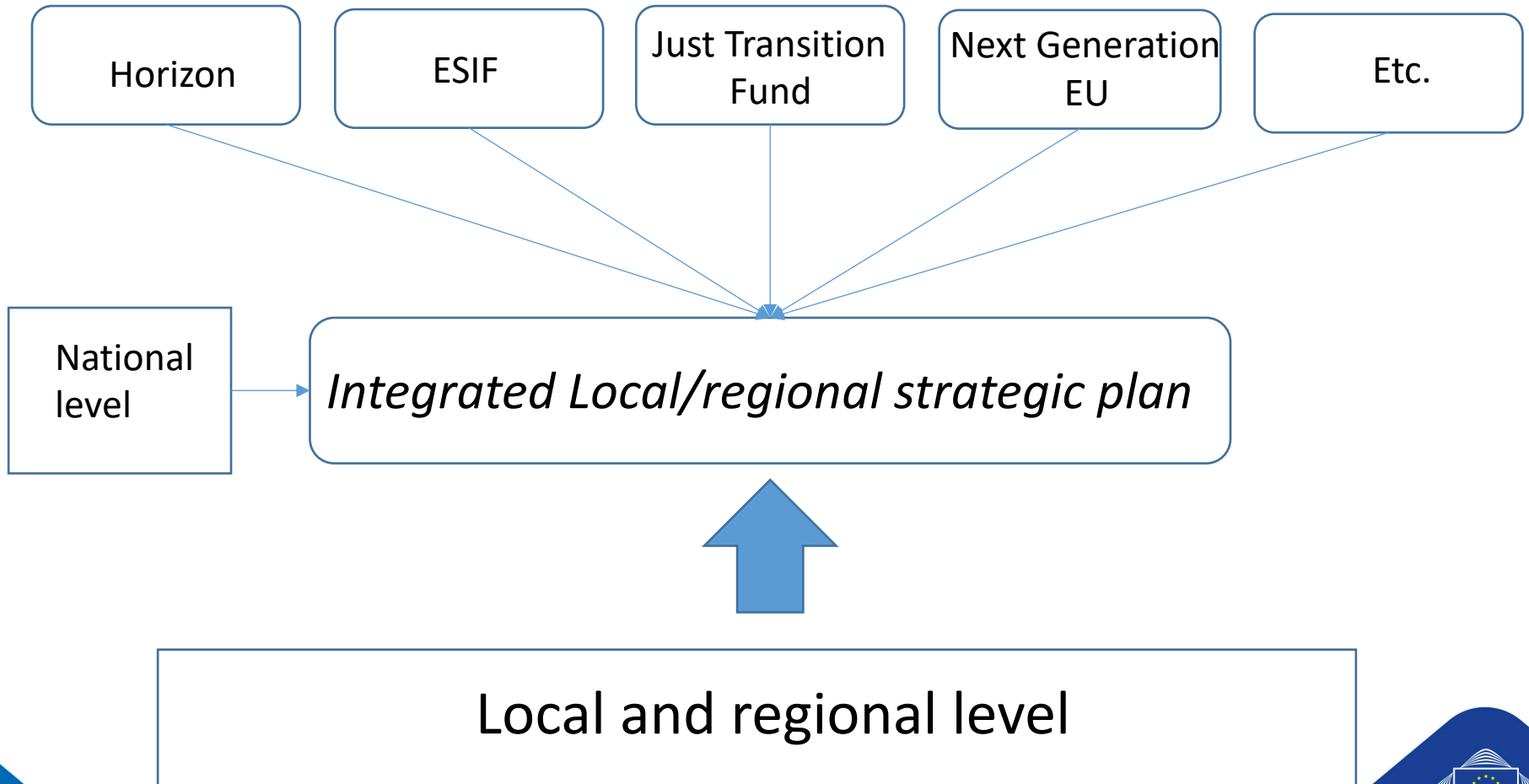


Options for an integrated approach

Option 1: Synergies at EU level

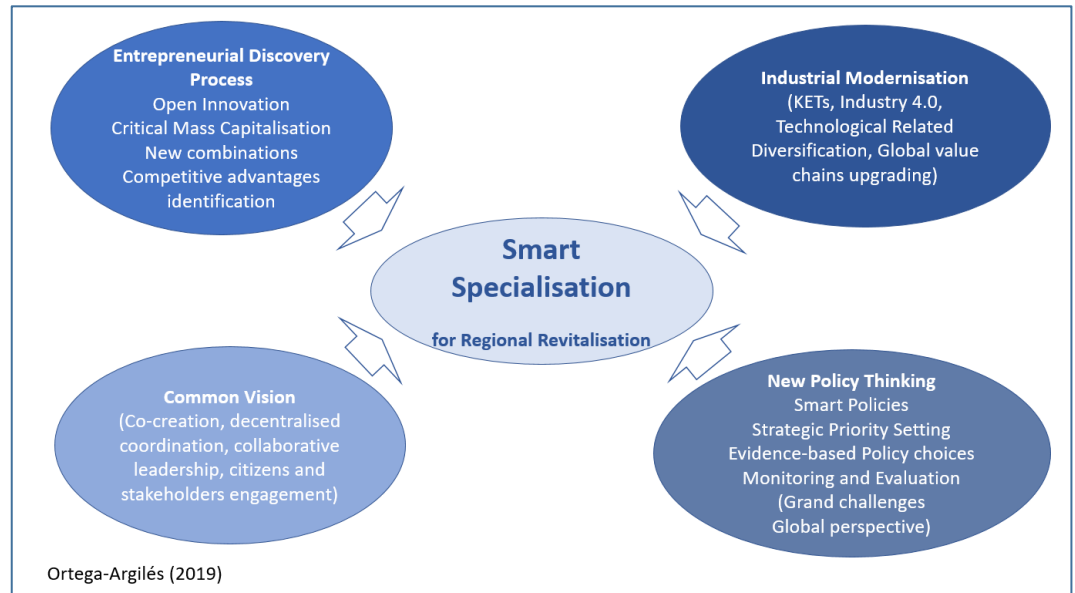


Options for an integrated approach
Option 2: Synergies at the local/regional level

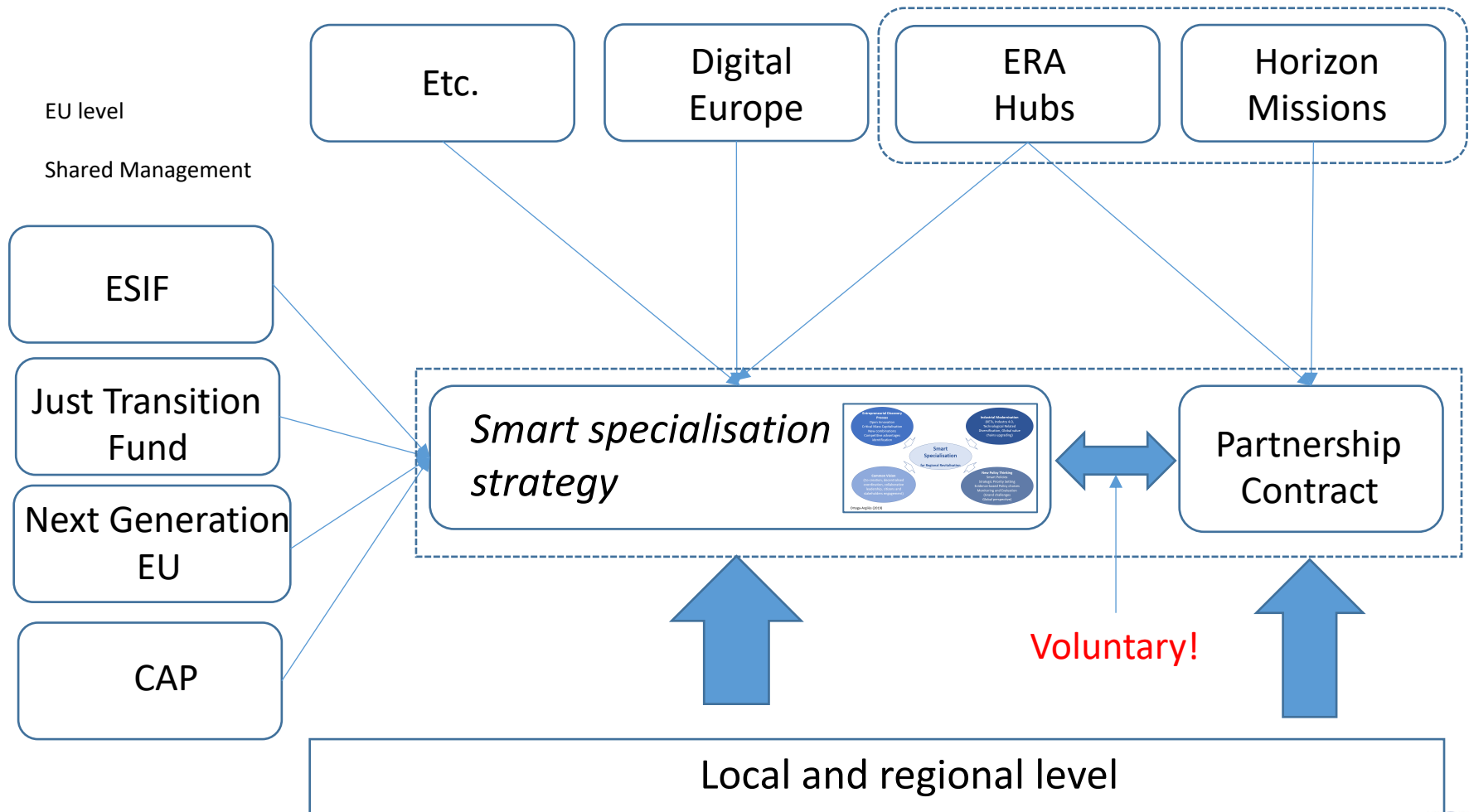


Smart Specialisation Strategies

- Enabling conditions for obtaining structural funds
- Place-based approach
- Entrepreneurial discovery
- Evidence based
- Cross-sectoral mobilisation
- Broad understanding of innovation
- Agenda-setting tool
- Over 160 existing strategies supported by an S4 platform
- Helping to develop a strategic approach
- Breaking downs silos



Combination of centrally managed and shared-management EU instruments



What new forms of implementation structures and governance are needed, such as national hubs? (I)

- The “**Missions**” are closely linked to the policy priorities of the EU and **go beyond the Horizon programme**
- Develop a true system of **multi-level governance** based on a place-based approach and strong local/regional partnerships and using **existing structures**
- Make the **existing smart specialisation strategies** a key element of the implementation of the Horizon missions (based on inclusive and strategic ecosystems)*
- **Create synergies between the EU instruments** in supporting the regional smart specialisation strategies
- **Promote the networking of cities and regions** via the network of smart specialisation strategies and interregional innovation investment
- Make the **ERA hubs a key element for linking up innovation eco-system and the local/regional Missions**
- Use the **Partnerships to link the dedicated sectors** with the regions (via the smart specialisation strategies)

ERA Communication: “Member States willing to increase the performance of their R&I system towards excellence should be encouraged and supported, building on dedicated Horizon Europe measures and **complementarities with smart specialisation strategies under Cohesion Policy.**”



What new forms of implementation structures and governance are needed, such as national hubs? (II)

- Develop the idea of **partnership contracts** between the local/regional and EU level to ensure a) a place-based approach and b) the commitment to contribute to the Horizon Mission objectives
- Carry out future calls for the Missions via a **3 step approach**:
 - 1st step: Call for cities and regions for developing dedicated actions to support the Horizon missions (with a specific requirement to link it to their smart specialisation strategy and their commitment to provide co-financing via national or other EU programmes)
 - 2nd step: Signing of a **partnership contract** with the selected cities/regions relating to the mission (based on their local/regional needs and possibilities) with a specific commitment of the regions to provide additional funding for investment via national or other EU programmes
 - 3rd step: **Providing funding for a number of projects** as part of the extended smart specialisation strategy via the Horizon programme (and in conjunction with other EU programmes)



What new forms of implementation structures and governance are needed, such as national hubs? (III)

- Make **local and regional authorities an integral part of the missions**
 - As part of the mission Boards
 - As part of the mission Assemblies
- Carry out a **regular multi-level dialogue** on implementing the missions
 - At each stage of the mission-implementation process
 - And specifically focussing on the progress made in achieving the missions
- Develop a coherent set of rules for implementing the missions via a system of **multi-level governance**
 - Coherent state aid rules
 - Creating more synergies between Horizon and ESIF funding (“mission to leave no one and no region left behind”)
 - Simplified procedures for reporting
 - Joint monitoring

What new forms of implementation structures and governance are needed, such as national hubs? (IV)

- Develop a **coherent set of rules** for implementing the missions via a system of multi-level governance
 - Coherent state aid rules
 - Creating more synergies between Horizon and ESIF funding (“mission to leave no one and no region left behind”)
 - Simplified procedures for reporting
 - Joint monitoring
- Using the **network of ERA Hubs (and possibly also the Digital Hubs)** to support this process
 - Ensure ERA Hubs at regional level
 - Make them an integral part of the local/regional innovation eco-system

Proposal for next steps

- In view of the future COM Communication
 - Strong focus on **multi-level governance** and active engagement of local and regional authorities based on a **place-based approach**
 - Reference to **innovation eco-systems** and the key role of smart specialisation strategies in creating synergies between EU programmes
 - More active engagement of LRAs in the Mission Boards and governance structures
 - Using **partnership contracts** as a solid basis for the cooperation on Missions
 - Strong focus on **existing structures of multi-level governance**
 - **Links to interregional innovative investment (ERDF)**
 - Ensure a strong link to the **ERA hubs** in linking the missions with the smart specialisation strategies
 - Focus on “**partnership contracts**” as a delivery tool
- Active engagement of the CoR
 - Key **regular political dialogue** on the implementation of the Missions: Participation of at least one CoR member in each Mission Board
 - **Promoting synergies with other EU policies** and programmes: Suggesting strategic dialogues with the Commissioners involved and leading CoR members
 - **Promoting the involvement of LRAs** in the Missions: Carrying out dedicated communication actions
 - Regularly **monitoring progress and preparing the necessary steps for improvement** and consolidation.



Many thanks for your attention!

Thomas.Wobben@cor.Europa.eu



European Committee
of the Regions